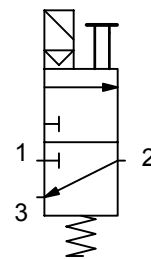


Symbol



**Technical Data :**

<b>Body material</b>	Die-cast zamak	<b>Nominal voltage</b>	12 Volt
<b>Mounting- CNOMO</b>	2 Screws M 4	<b>Nominal current</b>	50 mA
<b>Medium</b>	filtered compressed air	<b>Connection</b>	Pg 9
<b>Working pressure</b>	0 - 8 bar	<b>Limit of Protection</b>	IP 65
<b>Manual override</b>	Yes	<b>Indicator lamp</b>	LED yellow

Term	Typ	Ordering code	Comment
3/2 - Way-Servo valve intrinsically safe	MV 3/2 A - C - RF- T	11010 - 0151	